



**GATEWAY
MARIETTA**
COMMUNITY IMPROVEMENT DISTRICT

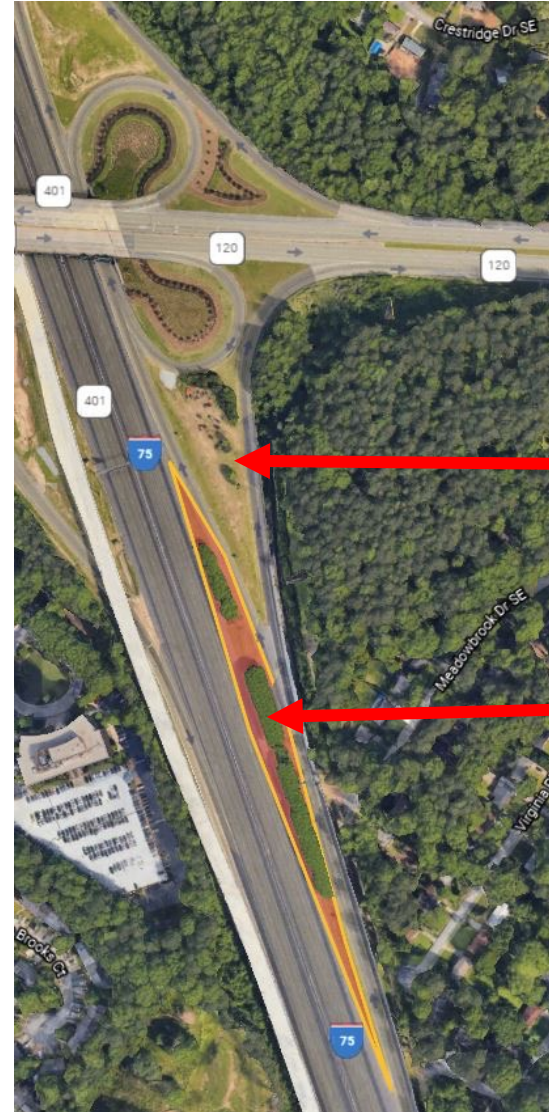
2024 Landscape Maintenance Pre-Bid Call

May 1, 2024

Overview of GMCID area- Blanche Underpass, South Marietta Parkway & Delk Road



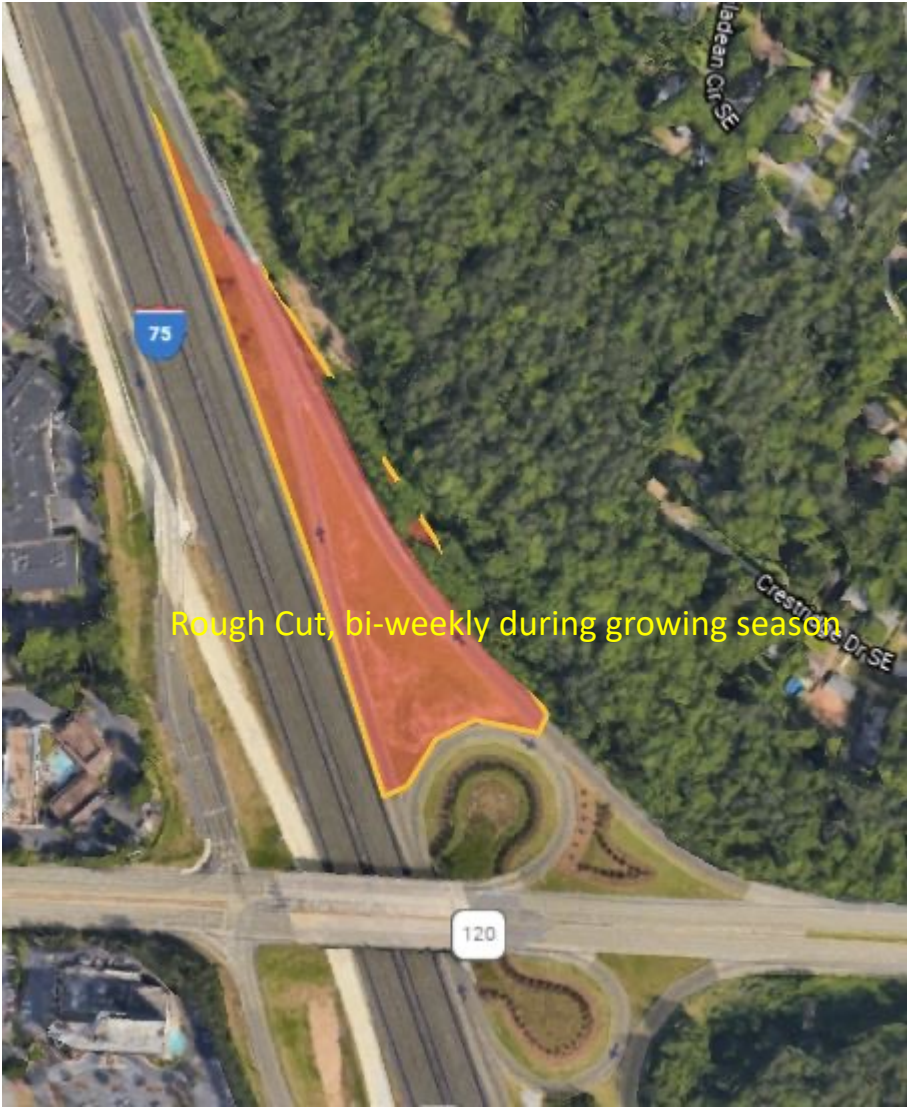
- South Marietta Parkway

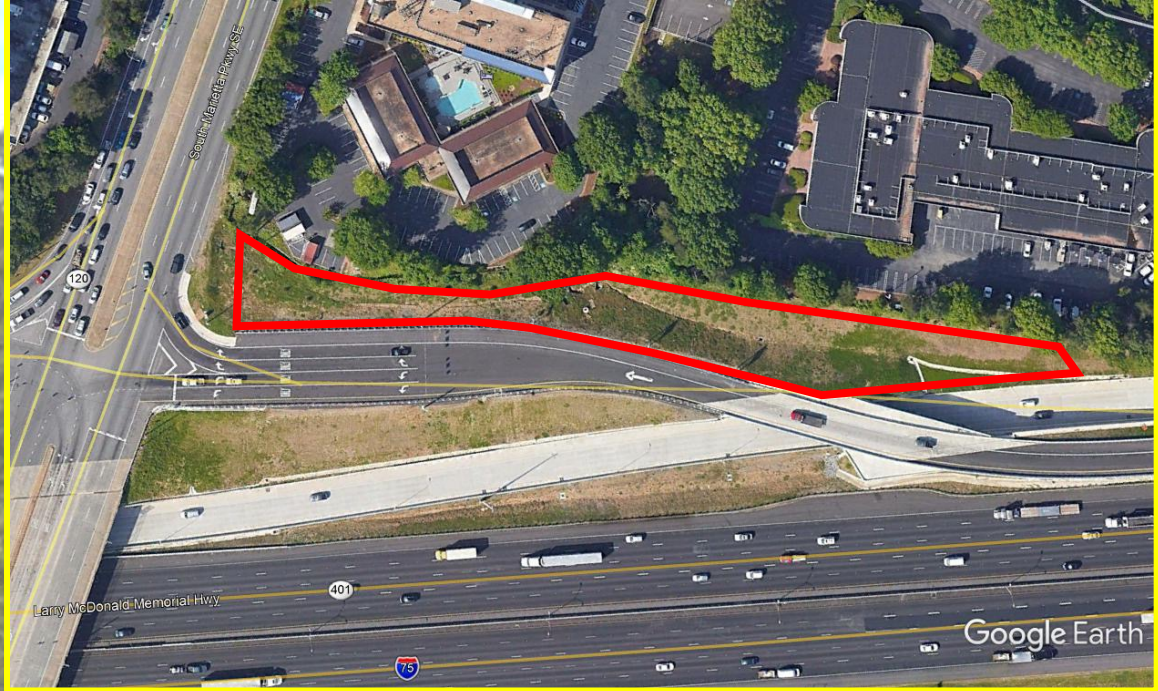


Rough Cut, bi-weekly during growing season

Crepe myrtles/bed area coming off of I-75 NB to be maintained

Northern end of SMP entrance ramp.
Previous staging area.





Rough Cut, bi-weekly during growing season



Rough Cut, bi-weekly during growing season



Rough Cut, bi-weekly during growing season



Delk Road Interchange



Gateway signage has been added on each corner of Franklin Gateway and Delk Road. The boundaries will now include maintenance of the landscaping at the northwest corner of Delk and Franklin Gateway as marked in the photo below.





Rough Cut, bi-weekly during growing season



Larry McDonald Memorial Hwy

401

© 2021 Google

Google Earth



Rough Cut, bi-weekly during growing season



These two triangles maintained on the same frequency as the landscaped areas.

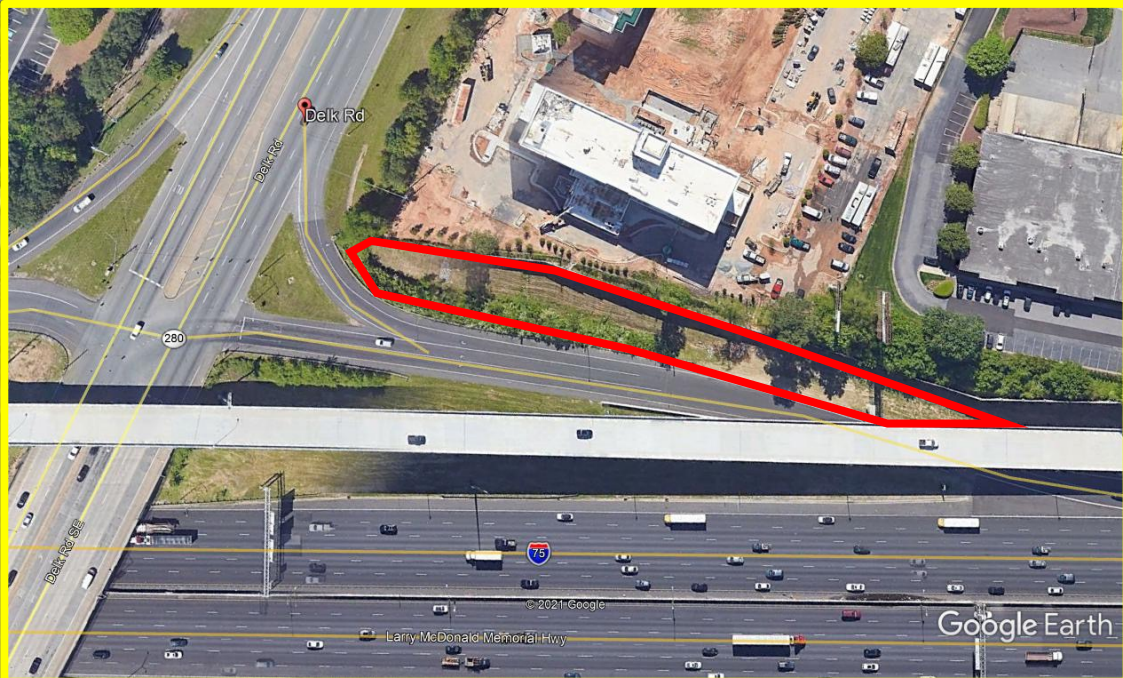
Rough Cut, bi-weekly during growing season



Rough Cut, bi-weekly during growing season

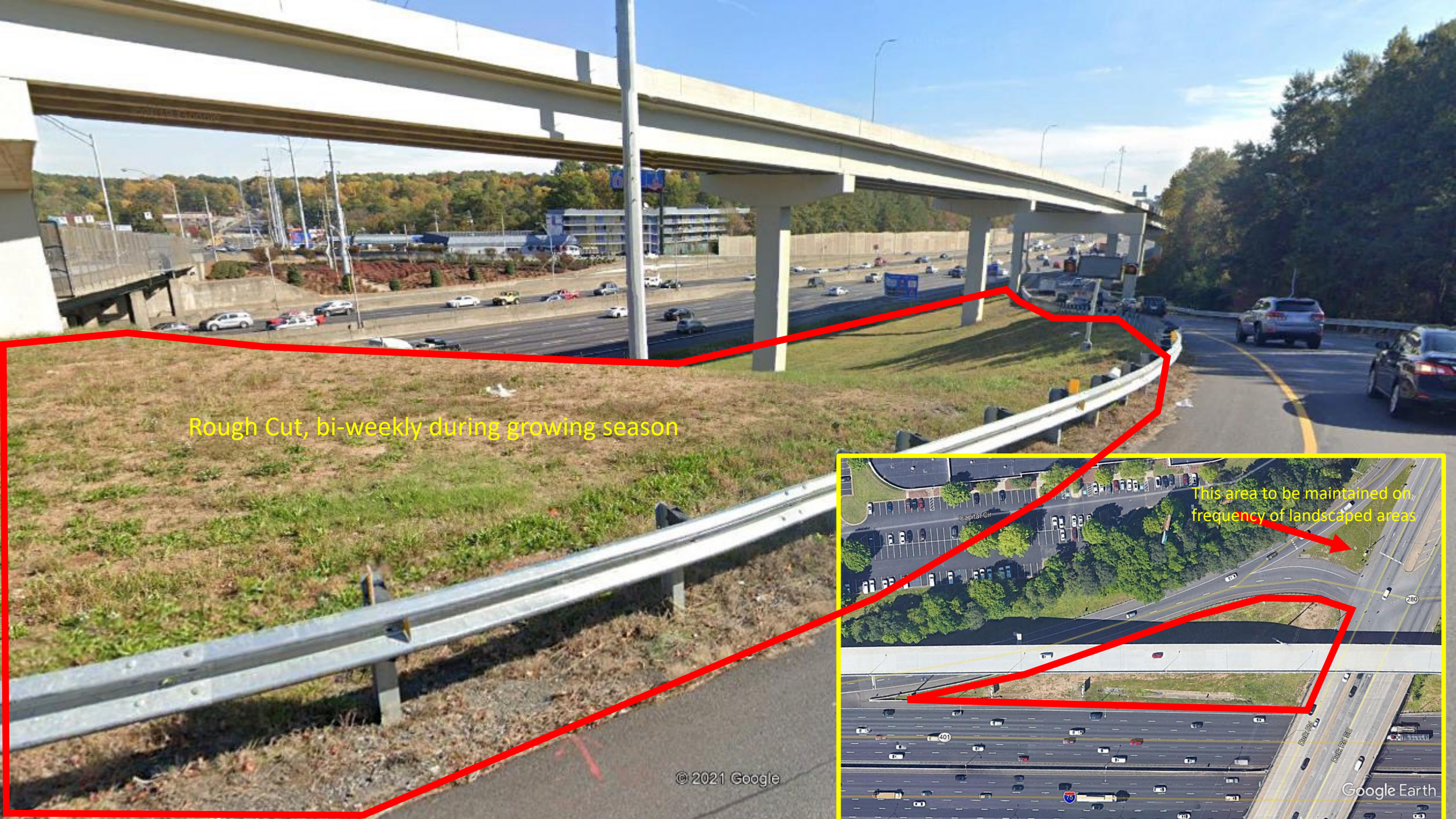
Maintenance of elaeagnus and other so it is kept tight and does not get hairy. If above and beyond general maintenance it will be handled under an additional agreement.

TV+ Interior
\$89
888 728-4120



© 2021 Google

Google Earth

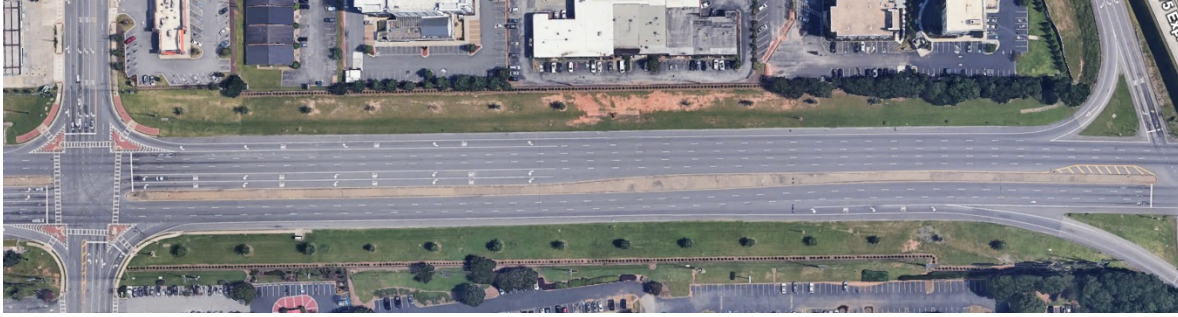


Rough Cut, bi-weekly during growing season

This area to be maintained on frequency of landscaped areas



Delk Road Corridor, landscaped on both sides.
This area has recently been relandscaped and has more robust plantings



SMP Corridor, landscaped areas on either side and at southbound exit.

Delk Road northbound Exit, landscaped area



South Marietta Parkway Northbound landscaped areas



All of these areas are to be maintained per the frequency schedule

Additional Items

- Pricing Sheet
 - Maintenance Cost
 - Pinestraw cost
 - Please indicate cost for full application and .5(half) application
 - Pinestraw to be long needle
 - Miscellenous Rate/Cost
 - Areas for bi-weekly rough cut during the growing season have been indicated. These area should still have weekly maintenance for trash pick up. If there are specific areas that prove to grow more quickly we will discuss frequency.